



ADDERView **PRO**

The AdderView Pro is a professional grade KVMA switch delivering ultimate flexibility for users who wish to share a high resolution screen and modern USB peripherals between a multiplicity of computers

The AV8PRO-DVI is designed to enable eight computers to be controlled from a single high resolution KVM console using either dual link DVI or high definition analogue video links. The switch makes use of Adder's True Emulation technology which enables USB HID devices to be continuously emulated to each computer. This unique technology enables instantaneous and reliable hotkey switching whilst also supporting the extra keys and features of enhanced keyboards and mice. Furthermore, the AdderView includes two independently switchable USB 2.0 channels and an audio channel, giving the user the flexibility to attach selected peripherals to different computers. An advanced OSD completes the professional switching experience.



Keyboard, mouse or OSD channel selection

The AdderView Pro can be switched using selectable keyboard hotkeys, 3 button mice or the front panel controls. An advanced OSD function is also provided that enables you to name and select computers with ease and configure the Pro's

operation. Some high resolution professional screens will only display native resolutions and so the AdderView automatically senses the display's preferred resolution to ensure that the OSD is always displayed in the best way. This feature is a must have to ensure compatibility with high end display devices.

FEATURES

Full Dual Link DVI-I video with extended profile DDC EDID

The AdderView Pro features full dual link DVI video delivering 4 megapixel resolutions at 60Hz. Because the AdderView features DVI-I, you can also use a mixture of digital and analogue sources without swapping cables. The extended DDC EDID profile ensures that the switched graphics card is always optimised to work with your screen. The dual link DVI capabilities enable users to work at very high resolutions including 2K (2048 x 1080) for film post production or WQXGA (2560 x 1600) for detailed medical imaging.

True Emulation USB2.0 technology

The AV8PRO-DVI is the first KVMA switch to feature Adder's advanced True USB Emulation technology. Emulated USB provides an instantaneous and reliable switching action and makes keyboard hotkey and mouse switching possible. However, previous implementations have used only generic emulations and consequently have only been able to support the most basic keyboard and mouse features. Adder's revolutionary True Emulation technology overcomes this frustrating limitation by emulating the true character of the connected devices to all the computers simultaneously. This means that you can now use the extra keys, wheels, buttons and controls that are commonly found on modern keyboards and mice. It also means that you can use fancy keyboards that were previously not fully compatible with KVM switches.

Independant simultaneous device selection

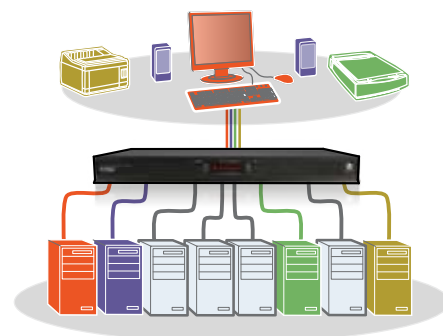
Flexibility is key to the AdderView Pro. The switch enables you to use the KVMA console to work on one computer whilst your USB peripherals are connected to other computers and your speakers are playing music from yet another. You can choose how the switching action works by selecting different switching modes from the On-Screen-Display. Furthermore, the OSD shows you visually which peripheral is connected to which computer so it's easy to remain in full control.

Broad USB 2.0 Hi Speed device support

A vast range of USB devices can be connected to the AdderView. From non standard human interface devices to printers and scanners. This gives great flexibility. For example, you could be scanning a set of documents onto one computer whilst working on another and printing from yet another, all at the same time. The USB 2.0 switching action has been carefully engineered to ensure maximum computer reliability when connecting and disconnecting USB devices.

RS232 port for control, synchronisation and upgrade

An RS232 interface enables the AV8PRO-DVI to be remotely switched using simple ASCII codes. When the channel is switched, the same ASCII codes are echoed to the RS232 port and so, by linking RS232 ports, two or more units can be switched in synchrony to create a multi video head switching system. The serial port enables a 4 (RC4) or 8 (RC8) button switch unit to be used with the AdderView. The same RS232 port can also be used to upgrade the firmware to guarantee your hardware investment continues to deliver real value well into the future.



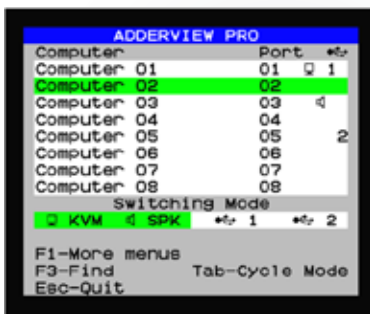


ADDERView **PRO**

The AdderView 8PRO-DVI is a professional grade media KVMA switch delivering ultimate flexibility for users who wish to select mixed inputs from different sources

TECHNICAL SPECIFICATIONS

Hardware compatibility:	Supports PC, RS/6000, Alpha, SGI, Sun and Apple with USB keyboard and mouse, and VGA or DVI video interfaces
Software compatibility:	Operates with all known software and operating systems including Windows (all), DOS, Linux, Unix, BSD, all Sun OS, all Mac OS, NetWare etc.
Computer connections at switch:	USB2.0 type B, Dual-link DVI-I, 3.5mm stereo jack
Local KVM console connection:	Video: HDD I5, Dual-link DVI-D Keyboard/Mouse: 2 x USB type A Switched USB: 2 x USB2.0 type A Audio: 3.5mm stereo jack Other Connections: Options (flash upgrade, sync with other AV8PRO-DVI and RS232 triggered power switches): DB9M
Physical design:	1U high metal case 482mm/19" (w), 215mm/8.5" (d), 45mm/1.8" (h)
Power:	2.5mm DC jack, power adapter included; 100-240VAC 50/60Hz input to power adapter, 5VDC 4A output from power adapter
Operating temperature:	0°C to 40°C / 32°F to 104°F
Approvals:	CE, FCC
Order Codes:	AV8PRO-DVI-XX
XX= Mains Lead Country Code: UK = United Kingdom US = United States EURO = Europe AUS = Australia	



Intuitive Advanced On Screen Display

The AdderView PRO on screen display is designed to make it instantly obvious where each element of your system is connected, and which elements are active.

Local, Remote and Global Computer Control



ADDER TECHNOLOGY
Technology House, Trafalgar Way, Bar Hill,
Cambridge, CB23 8SQ UK
Tel: +44 (0)1954 780044 Fax: +44 (0)1954 780081
email: sales@adders.com www.adders.com

ADDER CORPORATION
29 Water Street
Newburyport, MA 01950 USA
Tel: +1 888 932 3337 Fax: +1 888 275 1117
email: usasales@adders.com www.adders.com

ADDER TECHNOLOGY ASIA PACIFIC
6 New Industrial Road
#07-01 Hoe Huat Industrial Building, Singapore 536199
Tel: +65 6288 5767 Fax: +65 6284 1150
email: asiasales@adders.com www.adders.com