

# DUAL-VIEW KVM SWITCH



## USER MANUAL

---

**CS-1742**

**CS-1744**

2004-09-24

**NOTE:** This equipment has been tested and found to comply with the limits for a Class B digital device pursuant to Subpart J of Part 15 of the FCC Rules. These limits are designed to provide reasonable protection against harmful interference in a residential installation. This equipment generates, uses and can radiate radio frequency energy and, if not installed and used in accordance with the instructions, may cause harmful interference to radio communications. However, there is no guarantee that interference will not occur in a particular installation. If this equipment does cause harmful interference to radio or television reception, which can be determined by turning the equipment off and on, the user is encouraged to try to correct the interference by one or more of the following measures:

- ◆ Reorient or relocate the receiving antenna.
- ◆ Increase the separation between the equipment and receiver.
- ◆ Connect the equipment into an outlet on a circuit different from that which the receiver is connected.
- ◆ Consult the dealer or an experienced radio/television technician for help.



## **Packing List**

---

The complete Master View CS-1742 / CS-1744 package consists of:

- ◆ 1 CS-1742 or CS-1744 USB KVM Switch
- ◆ 2 CS Custom Audio/Video Cables (CS-1742)
- ◆ 2 CS Custom USB/Video Cables (CS-1742)
- ◆ 4 CS Custom Audio/Video Cables (CS-1744)
- ◆ 4 CS Custom USB/Video Cables (CS-1744)
- ◆ 1 Firmware Upgrade Cable
- ◆ 1 User Manual
- ◆ 1 Quick Start Guide

Check to make sure that all the components are present and that nothing was damaged in shipping. If you encounter a problem, contact your dealer.

Read this manual thoroughly and follow the installation and operation procedures carefully to prevent any damage to the unit, and/or any of the devices that connect to it.

©Copyright 2004 ATEN® International Co., Ltd.  
Manual Part No. PAPE-0240-100  
Printed in Taiwan 09/2004

All brand names and trademarks are the registered property of their respective owners.

---

## Contents

---

<b>1. Introduction</b>	
Overview . . . . .	1
Features . . . . .	2
Hardware Requirements . . . . .	3
Console . . . . .	3
Computer . . . . .	3
Cables . . . . .	3
Front View . . . . .	4
Rear View . . . . .	6
<b>2. Installation</b>	
Before you Begin . . . . .	9
Cable Connection . . . . .	9
<b>3. Basic Operation</b>	
Manual Switching . . . . .	11
Hot Plugging . . . . .	11
Powering Off and Restarting . . . . .	12
Port ID Numbering . . . . .	12
<b>4. Hotkey Operation</b>	
Port Switching . . . . .	13
Cycling Through the Ports . . . . .	13
Going Directly to a Port . . . . .	14
Auto Scanning . . . . .	15
Hotkey Setting Mode . . . . .	16
Invoking HSM . . . . .	16
Alternate HSM Invocation Keys . . . . .	17
Alternate Port Switching Keys . . . . .	17
Keyboard Operating Platform . . . . .	18
List Hotkey Settings . . . . .	18
USB Reset . . . . .	19
Hotkey Beeper Control . . . . .	19
Disable Port Switching Keys . . . . .	19
Firmware Upgrade Mode . . . . .	19
Restore Default Settings . . . . .	20
HSM Summary Table . . . . .	20
Keyboard Emulation . . . . .	21
Sun Keyboard . . . . .	21

Mac Keyboard . . . . . 22

**5. The Firmware Upgrade Utility**

Preparation . . . . . 23  
Starting the Upgrade . . . . . 24  
    Upgrade Succeeded . . . . . 27  
    Upgrade Failed . . . . . 28  
    Upgrade Interrupted . . . . . 28

**Appendix**

Specifications . . . . . 29  
Troubleshooting . . . . . 30  
Hotkey Default Settings . . . . . 31  
    Limited Warranty . . . . . 31

## Conventions

---

This manual uses the following conventions:

- Courier** Indicates text that you should key in.
- [ ] Indicates keys you should press. For example, [Enter] means to press the **Enter** key. If keys need to be *chorded*, they appear together in the same bracket with a plus sign between them: [Ctrl+Alt].
  - 1. Numbered lists represent procedures with sequential steps.
  - ◆ Bullet lists provide information, but do not involve sequential steps.
  - > Indicates selecting an option on a menu. For example, Start > Run means to open the *Start* menu, and then select *Run*.
  - ▲ Indicates critical information.

# Chapter 1.

## Introduction

### Overview

---

The Master View Dual-View CS-1742 or CS-1744 USB KVM Switch brings dual head video functionality to ATEN's USB KVM switch technology. Now, two (CS-1742) or four (CS-1744) dual head computers can be accessed and controlled from a single console that consists of a USB keyboard, USB mouse, and two VGA, SVGA, or Multisync monitors.

In addition, the CS-1742 / CS-1744 incorporates a two port USB hub that allows each of the computers to share any USB peripherals connected to the hub on a *one computer at a time* basis. Recognizing the importance of sound, the switches are also audio enabled. A single microphone can provide audio input to each of the computers, and you can listen to the audio output of each computer on a single set of speakers (on a one-at-a-time basis).

The CS-1742 / CS-1744's independent (asynchronous) switching feature allows independent switching of the KVM, USB hub, the second display channel, and audio focus. If you wish, you can give one computer the KVM console focus, another the USB hub focus, while a third has the audio focus.

Setup is fast and easy; simply plug cables into their appropriate ports. There is no software to configure, no installation routines, and no incompatibility problems. Since the CS-1742 / CS-1744 intercepts keyboard input directly, it works on multiple operating platforms (PC compatible, Mac and Sun).

There are two convenient methods to access the computers: push button port selection switches located on the unit's front panel; and *hotkey* combinations entered from the keyboard.

Since a single console manages all of the computers, the CS-1742 / CS-1744 setup: 1) eliminates the expense of having to purchase separate peripheral components for each computer; 2) saves all the space those extra components would take up; 3) saves on energy costs; and 4) eliminates the inconvenience and wasted effort involved in constantly moving from one computer to another.

## Features

---

- ◆ Provides a second video channel to support dual head computers
- ◆ One console controls 2 (CS-1742) or 4 (CS-1744) dual head computers
- ◆ Two USB ports for USB device sharing
- ◆ Audio jacks for speaker and microphone sharing
- ◆ Independent (asynchronous) switching of the KVM, USB, and audio focus
- ◆ Fully compliant with the USB 1.1 specification - supports transfer rates of 1.5/12 Mbps
- ◆ Easy to install - no software required - connecting cables is all it takes
- ◆ Easy to operate - computer selection via push button switches or hotkeys
- ◆ Hotkey OS selection
- ◆ LED display for easy status monitoring
- ◆ Auto Scan Mode for monitoring all computers
- ◆ Caps Lock, Num Lock, and Scroll Lock, states are saved and restored when switching
- ◆ Keyboard and mouse emulation for error free booting
- ◆ Supports multimedia USB keyboards; supports Mac & Sun keyboards
- ◆ Supports Microsoft Intellimouse and the scrolling wheel on most mice; supports Logitech and Microsoft wireless keyboards and mice
- ◆ Supports multibutton mice with appropriate drivers installed
- ◆ Superior video quality - 2048 x 1536; DDC2B
- ◆ Hot pluggable - add or remove computers for maintenance without powering down the switch
- ◆ Upgradeable firmware
- ◆ Compatible with all operating platforms
- ◆ Supports Windows 98SE or higher, Mac OS 8.6 or higher, SUN Blade 2000/100, (Sun Solaris 8 or higher) Unix and Linux RedHat 7.1 or higher



---

## Hardware Requirements

---

### Console

- ◆ Monitors capable of the highest resolution that you will be using on any computer in the installation.
- ◆ A USB style mouse
- ◆ A USB style keyboard

### Computer

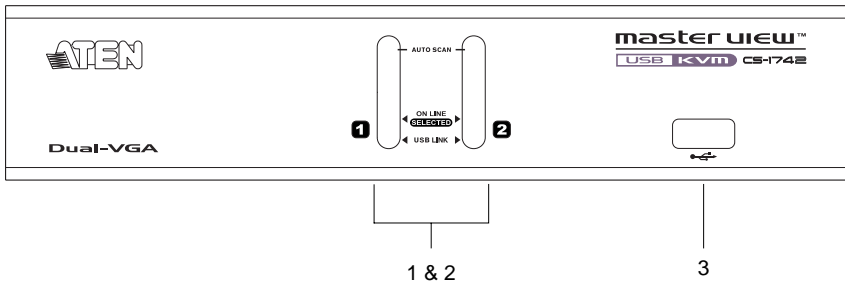
- ◆ A VGA, SVGA or Multisync port
- ◆ Type A USB port

### Cables

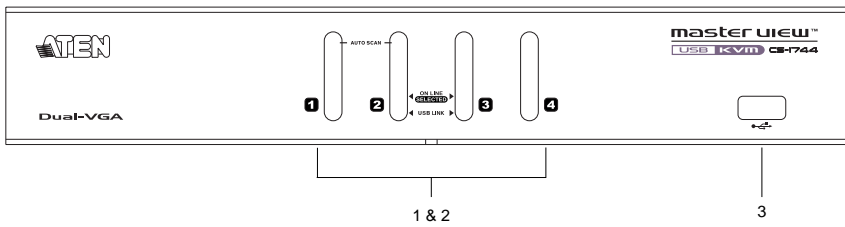
Only CS Custom cable sets specifically designed to work with this switch may be used to link to the computers. Two (CS-1742) or four (CS-1744) cable sets are provided with this package. Additional cable sets can be purchased from your dealer.

## Front View

### CS-1742:



### CS-1744:

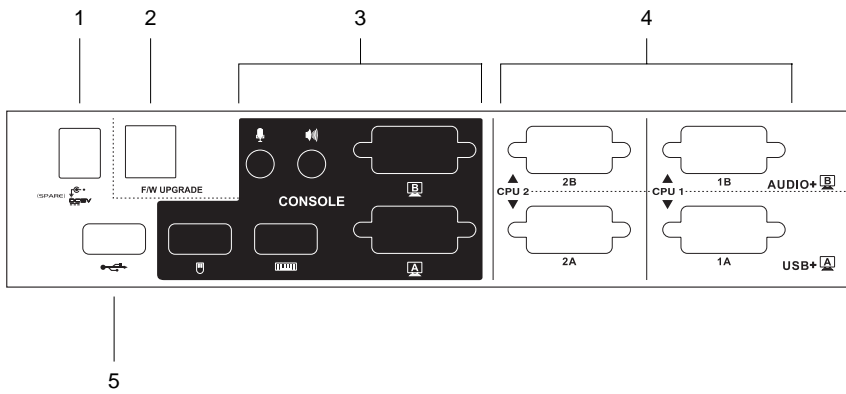


The front panel components are described in the table below:

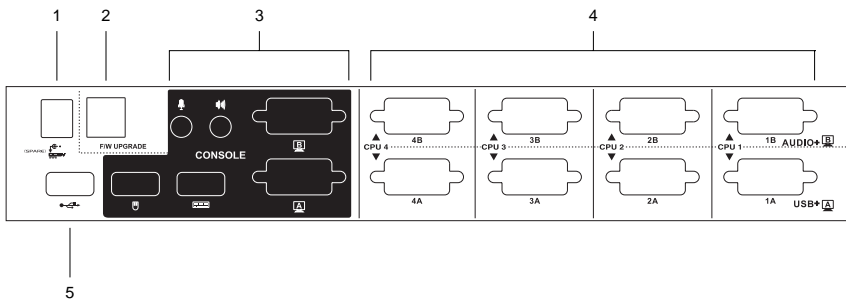
1.	Port Selection Switches	<p>Press a switch to access the computer attached to its corresponding port.</p> <p>Pressing Buttons 1 and 2 simultaneously for 2 seconds starts <i>Auto Scan Mode</i>. See p. 15 for details.</p>
2.	Port LEDs	<p>The Port LEDs are built into the Port Selection Switches. The upper ones are the KVM Port LEDs; the lower ones are the USB LEDs:</p> <p><b>KVM:</b> Lights DIM ORANGE to indicate that the computer attached to the corresponding port is up and running (On Line).</p> <p>Changes to BRIGHT ORANGE to indicate that the computer attached to its corresponding port is the one that has the KVM focus (Selected).</p> <p>Flashes to indicate that the computer attached to its corresponding port is being accessed under Auto Scan mode.</p> <p><b>USB:</b> Lights DIM GREEN to indicate that there is a USB cable connection to the computer. Does not light if there is no USB connection to the computer (see the installation diagram on p. 10).</p> <p>Changes to BRIGHT GREEN to indicate that the computer attached to its corresponding port is the one that has access to the USB peripherals.</p>
3.	USB Port	<p>Cables from your USB peripherals (printers, scanners, etc.) can plug in here, as well as into the USB port on the rear panel.</p>

## Rear View

### CS-1742:



### CS-1744:



The rear panel components are described in the table below:

1.	Power Jack	If you choose to use external power, the power adapter cable plugs into this jack.  <b>Note:</b> Use of a power adapter (DC 5V) is optional, and requires a separate purchase. See p. 10 for power adapter details.
2.	Firmware Upgrade Port	The Firmware Upgrade Cable that transfers the firmware upgrade data from the administrator's computer to the CS-1742 / CS-1744 plugs into this RJ-11 connector.  See p. 23 for firmware upgrading details.
3.	Console Port Section	The cables from your console components (keyboard, mouse, monitors, speakers and microphone), plug in here. Each port is marked with an icon to indicate itself.
4.	CPU Port Section	The cables that link the switch to your computers plug in here.* Each CPU port is comprised of two connectors: The upper connector carries the audio data (microphone and speakers) and the video data for monitor B; the lower connector carries the USB data (keyboard, mouse, and peripherals) and the video data for monitor A.
5.	USB Port	Cables from your USB peripherals (printers, scanners, etc.) can plug in here, as well as into the USB port on the front panel.

\* Only cables specifically designed to work with this switch can be used (see the Cables section on p. 3, for details). Do **NOT** attempt to use ordinary 15 pin VGA connector cables to link these ports to the computers.

**Notes:**

---

## Chapter 2. Installation

### Before you Begin

---



1. Make sure that power to all the devices you will be connecting up have been turned off. You must unplug the power cords of any computers that have the *Keyboard Power On* function. Otherwise, the switch will receive power from the computer.
2. Make sure that all devices on the installation are properly grounded.

### Cable Connection

---


To set up your Master View CS-1742 / CS-1744 installation, refer to the installation diagram on the next page (the numbers in the diagram correspond to the steps below), and do the following:

1. Plug your Console devices (USB keyboard, USB mouse, monitors, microphone and speakers), into the switch's Console Ports.
2. Use the *Port A* KVM cable (the one with the USB connector) to connect any available CPU **A** port to the first VGA port and the USB port of the computer you are installing.
3. Use the *Port B* KVM cable (the one with the microphone and speaker connectors) to connect the CPU **B** port to the second VGA port and the audio jacks of the computer you are installing.

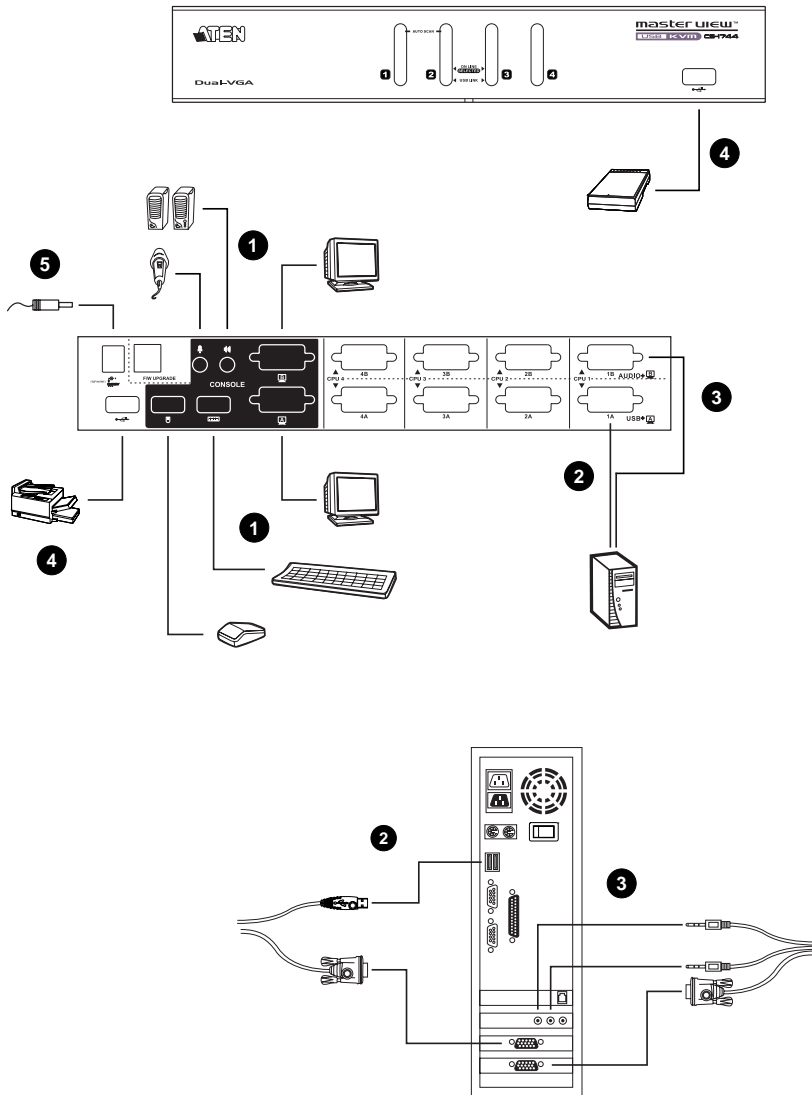
**Note:** Be sure that the Port B cable is in the same CPU port as the Port A cable — both in Port 1; both in Port 2, etc.

4. Connect your USB peripherals to the USB ports located on the front and rear panels.

5. If you choose to use external power, plug the power adapter cable into the switch's Power Jack, then plug the power adapter into an AC power source.

**Note:** The power adapter should be DC5V 2.6A with the inside positive and the outside negative: 

6. Turn on the power to the computers.





## Chapter 3. Basic Operation

### **Manual Switching**

---

There are two convenient methods to access the computers: Manual - which involves pressing the pushbutton port selection switches located on the unit's front panel; and Hotkey - which involves entering combinations from the keyboard. Hotkey port selection is discussed in the next chapter.

For manual port selection:

- ◆ Press and release a port selection switch to bring the KVM focus to the computer attached to its corresponding port. The USB and Audio focus does not change - they stay with the port that they are already on.
- ◆ Press and hold a port selection switch for more than 2 seconds to bring the KVM focus, plus the USB and Audio focus to the computer attached to its corresponding port.
- ◆ Press and hold port selection switches 1 and 2 for more than 2 seconds to start Auto Scan Mode (see p. 15 for Auto Scan Mode details).
- ◆ Press and release either port selection switch to stop Auto Scan Mode. The KVM focus goes to the computer attached to the corresponding port of the switch you pressed.

### **Hot Plugging**

---

The Master View CS-1742 / CS-1744 supports USB hot plugging - components can be removed and added back into the installation by unplugging their cables from the USB hub ports without the need to shut the unit down.

## **Powering Off and Restarting**

---

If it becomes necessary to Power Off the Master View unit, do the following:

1. Disconnect all the KVM cables from the CPU Port section of the switch (refer back to the installation diagram on p. 10).
2. If you are using an external power adapter, unplug the switch's power adapter cable.
3. Wait 10 seconds, then reconnect the KVM cables.
4. If you are using an external power adapter, plug the switch's power adapter cable back in.

## **Port ID Numbering**

---

Each CPU port on the CS-1742 / CS-1744 switch is assigned a port number (1 or 2 for the CS-1742; 1 to 4 for the CS-1744). The port numbers are marked on the rear panel of the switch (see p. 6).

The Port ID of a computer is derived from the CPU port number it is connected to. For example, a computer connected to CPU port 2 has a Port ID of 2.

The Port ID is used to specify which computer gets the KVM, USB peripheral, and audio focus with the Hotkey port selection method (see *Going Directly to a Port*, p. 14, for details).

## Chapter 4.

# Hotkey Operation

The CS-1742 / CS-1744 hotkey function makes it convenient to operate your KVM installation from the keyboard. Asynchronous (independent) switching of the KVM, USB hub, and audio focus is supported. You can give one computer the KVM console focus, another the USB hub focus, while a third has the audio focus.

## Port Switching

---

All port switches begin with tapping the **Scroll Lock** key twice. The tables below describe the actions that each combination performs.

**Note:** If using the Scroll Lock key conflicts with other programs running on the computer, the **Ctrl** key can be used, instead. See p. 17 for details.

### Cycling Through the Ports

Hotkey	Action
[Scroll Lock] [Scroll Lock] [Enter]	Brings the KVM, USB hub, and audio focus from the port that currently has the KVM focus to the next port on the installation (1 to 2; 2 to 1 for the CS-1742; 1 to 2; 2 to 3; 3 to 4; 4 to 1 for the CS-1744).  Note that the KVM, USB hub, and audio focus all go to this port even if they were on different ports to begin with.
[Scroll Lock] [Scroll Lock] [K] [Enter]	Brings only the KVM focus from the port that currently has it to the next port on the installation. The USB hub and audio focus remain where they are.
[Scroll Lock] [Scroll Lock] [U] [Enter]	Brings only the USB hub focus from the port that currently has it to the next port on the installation. The KVM and audio focus remain where they are.
[Scroll Lock] [Scroll Lock] [S] [Enter]	Brings only the audio focus from the port that currently has it to the next port on the installation. The KVM and USB hub focus remain where they are.

## Going Directly to a Port

Hotkey	Action
[Scroll Lock] [Scroll Lock] [n] [Enter]	Brings the KVM, USB hub, and audio focus to the computer attached to the port corresponding to the specified Port ID.  Note that the KVM, USB hub, and audio focus all go to this port even if they were on different ports to begin with.
[Scroll Lock] [Scroll Lock] [n] [K] [Enter]	Brings only the KVM focus to the computer attached to the specified port. The USB hub and audio focus remain where they are.
[Scroll Lock] [Scroll Lock] [n] [U] [Enter]	Brings only the USB hub focus to the computer attached to the specified port. The KVM and audio focus remain where they are.
[Scroll Lock] [Scroll Lock] [n] [S] [Enter]	Brings only the audio focus to the computer attached to the specified port. The KVM and USB hub focus remain where they are.
[Scroll Lock] [Scroll Lock] [n] [K] [U] [Enter]	Brings the KVM and USB hub focus to the computer attached to the specified port. The audio focus remains where it is.
[Scroll Lock] [Scroll Lock] [n] [K] [S] [Enter]	Brings the KVM and audio focus to the computer attached to the specified port. The USB hub focus remains where it is.
[Scroll Lock] [Scroll Lock] [n] [U] [S] [Enter]	Brings the USB hub and audio focus to the computer attached to the specified port. The KVM focus remains where it is.

**Note:** The **n** stands for the computer's Port ID number (1, 2, 3, or 4 - see *Port Numbering*, p. 12). Replace the **n** with the appropriate Port ID when entering hotkey combinations.

## Auto Scanning

The CS-1742 / CS-1744's Auto Scan feature automatically cycles the KVM focus through the computer ports at regular intervals. This allows you to monitor the computer activity without having to take the trouble of switching from port to port manually. See the table below for details.

Hotkey	Action
[Scroll Lock] [Scroll Lock] [A] [Enter]	Starts Auto Scan. The KVM focus cycles from port to port at 5 second intervals.
[Scroll Lock] [Scroll Lock] [A] [n] [Enter]	Starts Auto Scan. The KVM focus cycles from port to port at <b>n</b> second intervals.

- Note:**
1. The **n** stands for the number of seconds that the CS-1742 / CS-1744 should dwell on a port before moving on to the next. Replace the **n** with a number between 1 and 99 when entering this hotkey combination.
  2. While Auto Scan Mode is in effect, ordinary keyboard and mouse functions are suspended - only Auto Scan Mode compliant keystrokes and mouse clicks can be input. You must exit Auto Scan Mode in order to regain normal control of the console. To exit Auto Scan Mode, press [Esc] or [Spacebar].

## Hotkey Setting Mode

---

Hotkey Setting Mode is used to set up your CS-1742 / CS-1744 switch configuration. All operations begin with invoking Hotkey Setting Mode (HSM).

### Invoking HSM

To invoke HSM do the following:

1. Press and hold down the **Num Lock** key
2. Press and release the **minus** key
3. Release the **Num Lock** key

- Note:**
1. There is an alternate key combination to invoke HSM. See below for details.
  2. The minus key must be released within one half second, otherwise Hotkey invocation is canceled.

When HSM is active, the Caps Lock, and Scroll Lock LEDs flash in succession to indicate that HSM is in effect. They stop flashing and revert to normal status when you exit HSM.

Ordinary keyboard and mouse functions are suspended - only Hotkey compliant keystrokes and mouse clicks (described in the sections that follow), can be input.

At the conclusion of some hotkey operations, you automatically exit hotkey mode. With some operations, you must exit manually. To exit HSM manually, press the **Esc** key, or the **Spacebar**.

## Alternate HSM Invocation Keys

An alternate set of HSM invocation keys is provided in case the default set conflicts with programs running on the computers.

To switch to the alternate HSM invocation set, do the following:

1. Invoke HSM (see above)
2. Press and release the **H** key

The HSM invocation keys become the Ctrl key (instead of Num Lock) and the F12 key (instead of minus).

**Note:** This procedure is a toggle between the two methods. To revert back to the original HSM invocation keys, invoke HSM, then press and release the **H** key again.

## Alternate Port Switching Keys

The port switching activation keys can be changed from tapping the Scroll Lock key twice ([Scroll Lock] [Scroll Lock]) to tapping the Ctrl key twice. To change the port switching activation keys, do the following:

1. Invoke HSM (see p. 16)
2. Press and release the **T** key

**Note:** This procedure is a toggle between the two methods. To revert back to the original [Scroll Lock] [Scroll Lock] method, invoke HSM, then press and release the **T** key again.

## Keyboard Operating Platform

The CS-1742 / CS-1744's default port configuration is for a PC Compatible keyboard operating platform. If you have a Mac or Sun attached to a port, you can change the port's keyboard operating platform configuration as follows:

1. Bring the KVM focus to the port you want to set.
2. Invoke HSM (see p. 16)
3. Press and release the appropriate Function key (see table). After completing a setting, you automatically exit HSM.

Function Key	Operation
[F2]	Sets the Mac keyboard operating platform.
[F3]	Sets the Sun keyboard operating platform.*
[F10]	Auto detects the keyboard operating platform (for PC compatible systems).

\* The first time that the Sun system runs from a port, you must configure its port for the Sun keyboard operating platform before you turn the system on, or else the Sun system will not start.

## List Hotkey Settings

To see a listing of the current hotkey settings, do the following:

1. Open a text editor or word processor.
2. Invoke HSM (see p. 16).
3. Press and release the **F4** function key.



## USB Reset

If the USB loses focus and needs to be reset, do the following:

1. Invoke HSM (see p. 16).
2. Press and release the **F5** function key.

## Hotkey Beeper Control

The Beeper can be hotkey toggled On and Off. To toggle the Beeper, do the following:

1. Invoke HSM (see p. 16).
2. Press and release the **B** key.

The Beeper toggles On or Off. The Command Line displays *Beeper On* or *Beeper Off* for one second; then the message disappears and you automatically exit Hotkey Mode.

## Disable Port Switching Keys

To disable the Port Switching Keys ([Scroll Lock] [Scroll Lock] / [Ctrl] [Ctrl]), do the following:

1. Invoke HSM (see p. 16).
2. Press **[X] [Enter]**.

This procedure is a toggle. To enable the Port Switching keys repeat steps 1 and 2.

## Firmware Upgrade Mode

To set the CS-1742 / CS-1744 to Firmware Upgrade Mode, do the following:

1. Invoke HSM (see p. 16).
2. Key in: upgrade
3. Press **[Enter]**.

The front panel LEDs flash to indicate Firmware Upgrade Mode is in effect.

**Note:** To exit Firmware Upgrade Mode, you must power off the switch.

## Restore Default Settings

To reset the CS-1742 / CS-1744 to its default hotkey settings, do the following:

1. Invoke HSM (see p. 16).
2. Press **[R]** **[Enter]**.

All hotkey settings return to the factory default settings. A table showing the CS-1742 / CS-1744's default settings is provided in the appendix on p. 31.

## HSM Summary Table

After invoking HSM (see p. 16), key in one of the following keys to perform the corresponding function:

Input	Function
H	Toggles between the default and alternate HSM invocation keys.
T	Toggles between the default and alternate Port Switching keys.
F10	Auto detects the keyboard operating platform (for PC compatible systems).
F2	Sets the Mac keyboard operating platform.
F3	Sets the Sun keyboard operating platform.
F4	Lists the current hotkey settings via the <i>Paste</i> function of a text editor or WP.
F5	Performs a USB reset.
B	Toggles the beeper On and Off.
X [Enter]	Enables/Disables the Port Switching keys.
R [Enter]	Resets the hotkey settings to their default status.
upgrade [Enter]	Invokes Firmware Upgrade Mode.

## Keyboard Emulation

### Sun Keyboard

The PC compatible (101/104 key) keyboard can emulate the functions of the Sun keyboard when the Control key [Ctrl] is used in conjunction with other keys. The corresponding functions are shown in the table below.

**Note:** When using [Ctrl] combinations, press and release the **Ctrl** key, then press and release the activation key.

PC Keyboard	Sun Keyboard
[Ctrl] [T]	Stop
[Ctrl] [F2]	Again
[Ctrl] [F3]	Props
[Ctrl] [F4]	Undo
[Ctrl] [F5]	Front
[Ctrl] [F6]	Copy
[Ctrl] [F7]	Open
[Ctrl] [F8]	Paste
[Ctrl] [F9]	Find
[Ctrl] [F10]	Cut
[Ctrl] [4]	☾
[Ctrl] [H]	Help
[Ctrl] [1]	Mult
[Ctrl] [2]	V_DN
[Ctrl] [3]	V_UP
[Win]	Compose

## Mac Keyboard

The PC compatible (101/104 key) keyboard can emulate the functions of the Mac keyboard. The emulation mappings are listed in the table below.

**Note:** When using key combinations, press and release the first key, then press and release the second one.

PC Keyboard	Mac Keyboard
[Shift]	Shift
[Ctrl]	Ctrl
[Win]	⌘
[Ctrl] [4]	▲
[Alt]	L Alt/Option
[Prt_Sc]	F13
[Scroll Lock]	F14
[Desktop Menu]	=
[Enter]	Return
[Back Space]	Delete
[Ins]	Help
[Ctrl] [Win]	F15
[Ctrl] [1]	Mult
[Ctrl] [2]	V_DN
[Ctrl] [3]	V_UP

## Chapter 5.

# The Firmware Upgrade Utility

The Windows-based Firmware Upgrade Utility (FWUpgrade.exe) provides a smooth, automated process for upgrading the KVM switch's firmware. The Utility comes as part of a Firmware Upgrade Package that is specific for each device. New firmware upgrade packages are posted on our web site as new firmware revisions become available. Check the web site regularly to find the latest packages and information relating to them:

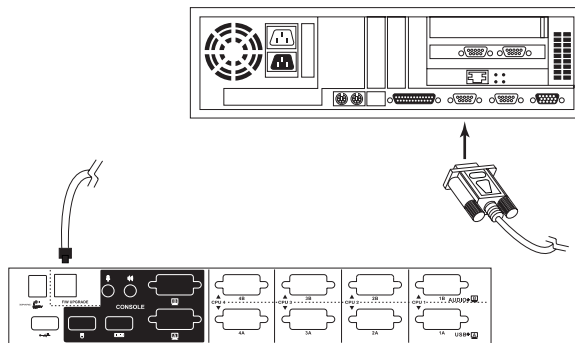
<http://www.aten.com.tw>

### Preparation

---

1. From a computer that is not part of your KVM installation go to our Internet support site and choose the model name that relates to your device (CS-1742 or CS-1744) to get a list of available Firmware Upgrade Packages.
2. Choose the Firmware Upgrade Package you want to install (usually the most recent), and download it to your computer.
3. Use the *Firmware Upgrade Cable* provided with this unit, to connect a COM port on your computer to the *Firmware Upgrade Port* of your switch
4. Invoke Firmware Upgrade Mode (see p. 19).

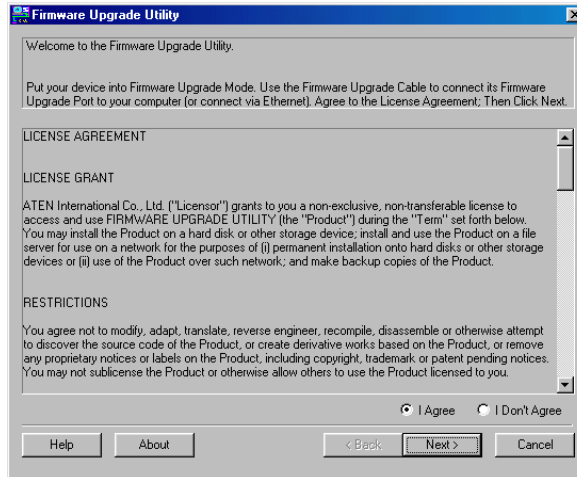
The front panel LEDs flash together to indicate Firmware Upgrade Mode is in effect.



## Starting the Upgrade

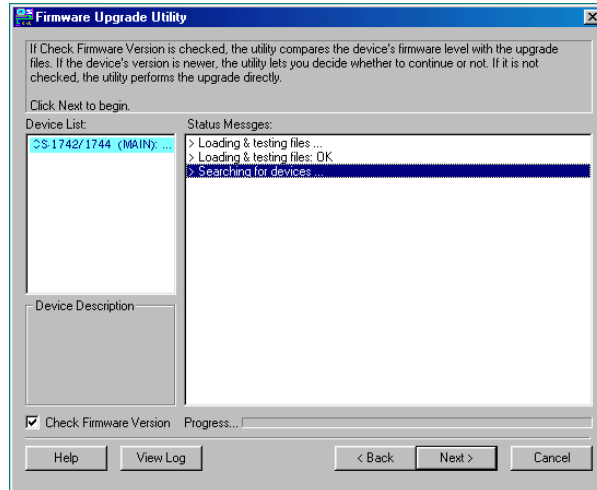
To upgrade your firmware:

1. Run the downloaded Firmware Upgrade Package file - either by double clicking the file icon, or by opening a command line and entering the full path to it. The Firmware Upgrade Utility *Welcome* screen appears:

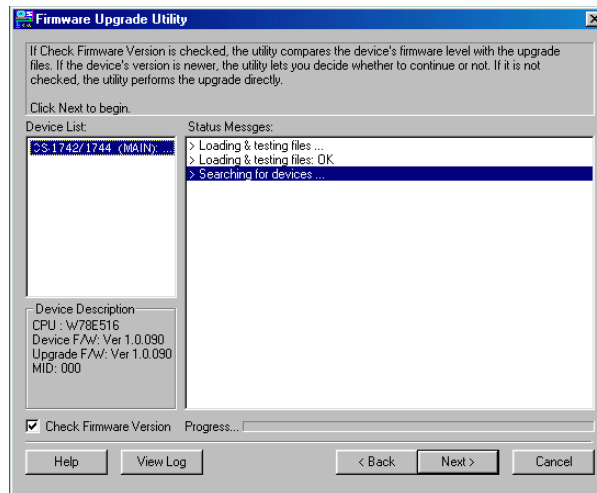


**Note:** The screenshots in this section are for example purposes. The screens that appear during your firmware upgrade may vary as to their wording and descriptions.

1. Read and *Agree* to the License Agreement (enable the I Agree radio button).
2. Click Next to continue. The Firmware Upgrade Utility main screen appears:  
The Utility inspects your installation. All the devices capable of being upgraded by the package are listed in the *Device List* panel.

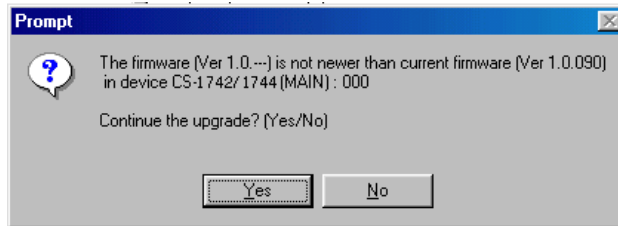


3. As you select a device in the list, its description appears in the *Device Description* panel.



4. After you have made your device selection(s), Click **Next** to perform the upgrade.

If you enabled *Check Firmware Version*, the Utility compares the device's firmware level with that of the upgrade files. If it finds that the device's version is higher than the upgrade version, it brings up a dialog box informing you of the situation and gives you the option to Continue or Cancel.



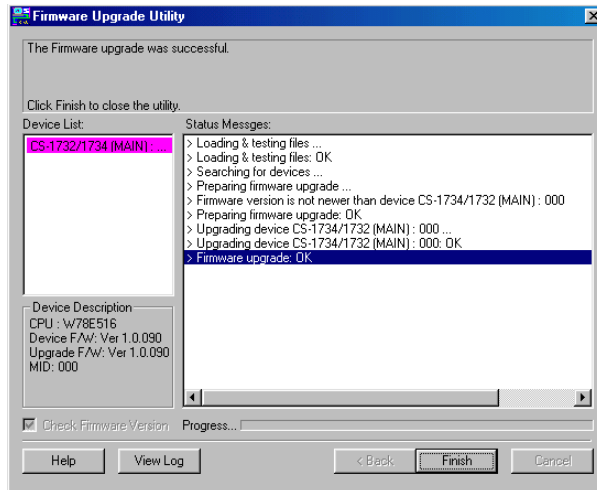
If you didn't enable *Check Firmware Version*, the Utility installs the upgrade files without checking whether they are a higher level, or not.

As the Upgrade proceeds status messages appear in the Status Messages panel, and the progress toward completion is shown on the *Progress* bar.



## Upgrade Succeeded

After the upgrade has completed, a screen appears to inform you that the procedure was successful.



To complete the upgrade:

1. Click **Finish** to close the Firmware Upgrade Utility.
2. Power off the switch
  - ◆ Unplug the KVM cables from the back of the switch.
  - ◆ If you are using a power adapter with your switch, unplug its power adapter cable from the power jack.
3. Remove the Firmware Upgrade Cable.
4. Connect all the KVM cables.
5. If you are using a power adapter, plug its cable back in.

### **Upgrade Failed**

If the *Upgrade Succeeded* screen doesn't appear, it means that the upgrade failed to complete successfully, in which case you should repeat the upgrade procedure from the beginning.

### **Upgrade Interrupted**

If the firmware upgrade procedure is abnormally halted (due to computer crash, power failure, etc.), the switch may become inoperable. If you find that the switch does not work following an interrupted upgrade, you must return it to the factory to have the firmware reinstalled. Contact your dealer for details.

# Appendix

## Specifications

Function		CS-1742	CS-1744
Computer Connections		2	4
CPU Port Selection		Front Panel Switches; Hotkey	
LEDs	On Line/Selected	2 (Orange)	4 (Orange)
	USB Link	2 (Green)	4 (Green)
Console Connectors	Keyboard	1 x USB Type A socket	
	Mouse	1 x USB Type A socket	
	Video	2 x HDB-15 - F	
	Audio	1 x Stereo earphone jack 1 x Microphone jack	
CPU Connectors		2 x SPHD-15 - F 2 x SPHD-15 - M	4 x SPHD-15 - F 4 x SPHD-15 - M
USB Peripheral Ports		2 x USB Type A ports	
Firmware Upgrade Port		1 x RJ-11 socket	
Power Jack		1 x DC 5V	
Scan Interval		1 - 99 secs.	
Keyboard / Mouse Emulation		USB	
Resolution		Up to 2048 x 1536; DDC2B	
Power Consumption		DC 5V; 1.25W	DC 5V; 1.35W
Power Adapter (optional)		DC 5V; 2.6A	
Operating Temperature		0 - 50° C	
Storage Temperature		-20 - 60° C	
Humidity		0 - 80% RH	
Housing		Metal	
Weight		0.82 kg	1.03 kg
Dimensions (L x W x H)		20.0 x 7.45 x 4.2cm	26 x 7.45 x 4.2cm

## Troubleshooting

Symptom	Possible Cause	Action
Erratic behavior.	Unit not receiving enough power.	Use a DC 5V power adapter if you are not already using one. If you are already using a power adapter, check that it matches the system specifications (DC 5V), and that it is plugged in and functioning properly.
Keyboard and/or Mouse not responding.	Keyboard and/or mouse need to be reset.	Unplug the cable(s) from the console port(s), then plug it/them back in.
	No connection to the computer.	Check the cable from the switch to the computer to make sure it is properly connected.
	KVM switch needs to be reset.	Power off all devices on the installation (see the note at the top of p. 9); power off the KVM switch; wait five seconds; then power up.
USB devices not responding.	USB ports need to be reset.	Unplug the device's USB cable from the USB port on the switch's rear panel, then plug it back in.
		Use the USB Reset hotkey combination (see p. 19), to reset the USB ports.
Device not recognized message (Windows)	Windows timing problem.	<ol style="list-style-type: none"> <li>1. Unplug the KVM cable from the computer's USB port.</li> <li>2. Go into Windows' <i>System Settings</i> and remove the <i>Unknown Device</i> entry.</li> <li>3. Plug the KVM cable back in. Windows will now recognize the device.</li> </ol>
Sun system does not start.	CPU port not configured correctly.	The first time that a Sun system runs from a port, you must configure its port for the Sun keyboard operating platform before you turn the system on, or else the Sun system will not start. See p. 18 for details.

## Hotkey Default Settings

---

The hotkey factory default settings are given in the table below:

Setting	Default
Port Switching	[Scroll Lock] [Scroll Lock]
Invoking HSM	[Num Lock] [ - ]
Auto Scan Interval	5 seconds
Beeper	On
Keyboard Operating Platform	PC Compatible - Auto Detect
Port Switching Keys	Enabled

### Limited Warranty

IN NO EVENT SHALL THE DIRECT VENDOR'S LIABILITY EXCEED THE PRICE PAID FOR THE PRODUCT FROM THE DIRECT, INDIRECT, SPECIAL, INCIDENTAL OR CONSEQUENTIAL DAMAGES RESULTING FROM THE USE OF THE PRODUCT, DISK OR ITS DOCUMENTATION.

The direct vendor makes no warranty or representation, expressed, implied, or statutory with respect to the contents or use of this documentation, and specially disclaims its quality, performance, merchantability, or fitness for any particular purpose.

The direct vendor also reserves the right to revise or update the device or documentation without obligation to notify any individual or entity of such revisions, or update. For further inquires please contact your direct vendor.